

# AFRICAN SCHOLARS' FUND

An Educational Trust registered with the Master of the High Court: NPO 002-838

---

PO Box 18097, Wynberg 7945 T: +27 21 689 9094 / 9431 F: 086 471 6171  
E: [office@asf.org.za](mailto:office@asf.org.za) [www.asf.org.za](http://www.asf.org.za)



Bike handover – Saxon Sea High School, Atlantis – Western Cape

# ANNUAL REPORT 2021 / 2022

## MISSION STATEMENT

*The African Scholars' Fund, through awards and guidance, assists promising young schoolchildren from the most-needy homes to complete their secondary education.*



## BANKING DETAILS IN SOUTH AFRICA

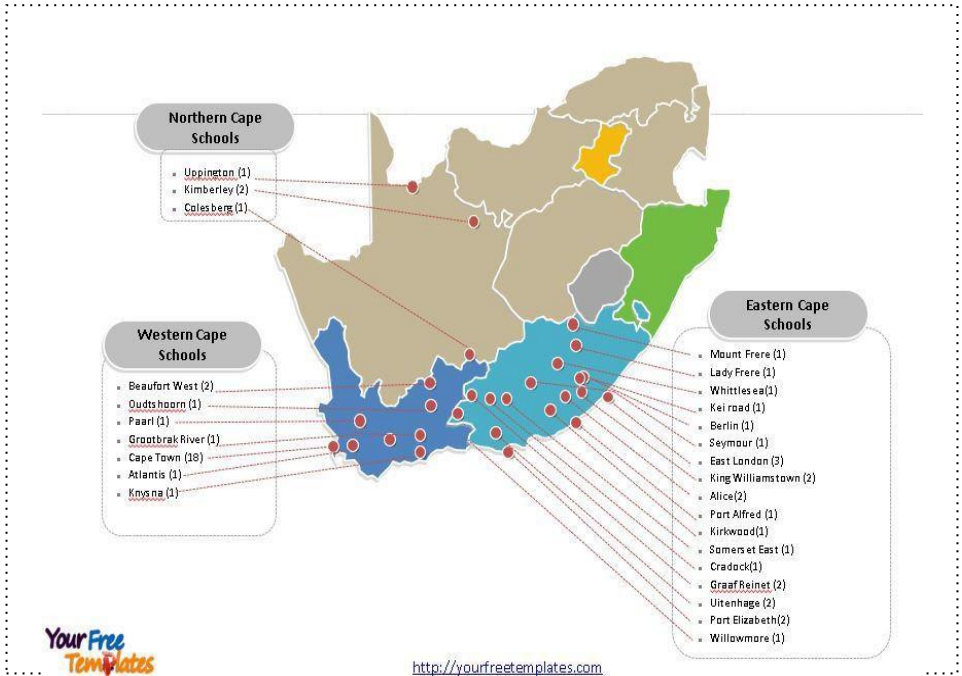
Bank: Standard Bank of SA Ltd  
Account type: Current account  
Account number: 07 140 410 4  
Branch code: 02 50 09  
Swift code: SBZA ZAJJ (Rondebosch)

## BANKING DETAILS IN THE UK

Bank: Natwest (Sort Code 55-70-13)  
Account name: African Scholars Fund  
Account number: 163 883 64

**\*Very NB:** when making a deposit/eft, please use your full name as reference, since enquiries made to the bank attract additional costs. Also note that banks no longer accept cheques.

## Our areas of operation are the Northern, Western and Eastern Cape



*Northern Cape:* 100% of the schools on our database are located in the more rural areas.

*Western Cape:* 4% of the schools on our database are located in the more deeply rural areas, with the remainder located in urban/township areas.

*Eastern Cape:* 62% of the schools on our database are located in the more deeply rural areas, with the remainder located in urban/township areas.

## CHAIRMAN'S REPORT

The past year has been a difficult one for African Scholars' Fund, but much more so for our bursars.

We have all had to contend with the consequences of the ongoing Covid pandemic, from which we appear to be emerging at last. While ASF's office has adapted and our staff have coped admirably, the impact on bursars has often gone beyond the immediate harm done to their learning experience at school, affecting their families through loss of employment and loss of loved ones (some of their stories are documented in the booklet which we prepared, 'The Global Covid-19 Pandemic and I', available on our website and in hard copy).

The resilience and determination of our bursars has served to strengthen our own determination to provide support. In this we have also been encouraged by our donors, whose reliability and concern for our bursars has been both emphatic and reassuring.

2021 saw changes in the staffing of our office; the excellent leadership provided by our director, Eliza James, who has now served us for fourteen years, ensured a smooth transition. We were also glad to welcome our new Treasurer and trustee, Shelly Herbert. Shelly is a chartered accountant and senior lecturer in the College of Accounting at UCT.

Both Eliza's and Shelly's reports set out more fully our activities during the past year, with Nthuthu Mnyaluza's report giving more details as to how well our bursars have coped with their schooling.

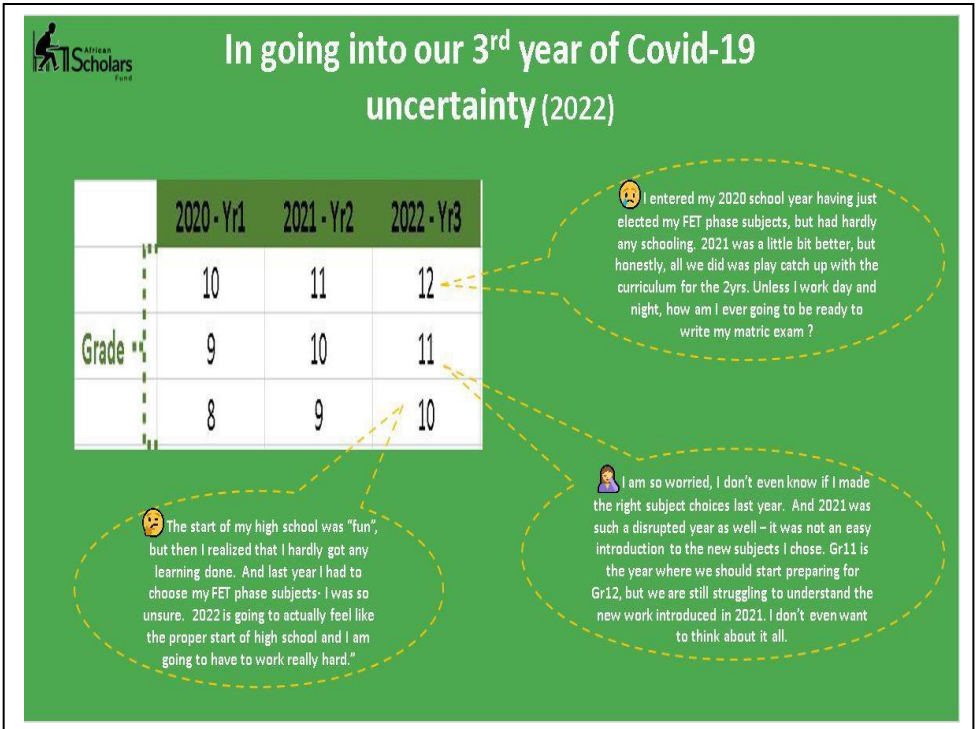
We continue to receive invaluable support from the ASF Trust in the UK under the guidance of Sandy Elsworth and with Peter Roberts as a new trustee there. We are hopeful that both here and, in the UK, fresh fundraising initiatives will help in ensuring the sustainability of the ASF. To that end, we have established endowment funds in both countries to hold bequests and large once-off donations, the income from which will be used to support our efforts into the foreseeable future.

Finally, a word of thanks to our staff, donors and volunteers, whose sterling efforts have ensured that we continue to play a role in supporting the disadvantaged and enabling them to build a better future.

**Geoff Everingham**  
**Chairman**

## DIRECTOR'S REPORT

Often times, gaining insight into another's reality leads to deeper understanding and a much clearer perspective of our own reality. Hence, I thought it pertinent to begin my reflection on the year that has been, by presenting a visual overview of our young learners' experience over these past few years of schooling:



Learners have certainly demonstrated their resilience. More so in light of the fact that many who previously experienced their parents as being absent – in that parents were usually off to work from the early hours in the morning and arrived back home late in the evening, leaving the older siblings to care for the younger ones – now faced the third consecutive year of experiencing unemployed, frightened and frustrated parents at home full-time. Adapting to this unfamiliar and uncertain-about-the-future set of familial and societal dynamics was bound to take its toll and manifest in all manner of behavioural challenges in the home and in the classroom.

Now, more than ever, educators are required to focus not merely primarily on the educational progress, but equally on recognising the emotional shifts taking place that are affecting the overall wellbeing of the learner. So too, parents can no longer leave the child's education entirely in the hands of their educator – additional resources, research

and support is required outside of the classroom. But truth be told, parents in marginalised communities have little to no capacity to meet these new demands.

The reality is that today's youth are tomorrow's leaders and influencers, and lest we allow ourselves be fooled – know that they are fully aware that it is indeed so. Today's youth demand fair opportunity, equal access and the right to be empowered such that they may pursue success and happiness. Keeping our focus squarely on education; if Covid has not caused a long enough pause for most people to realise the glaring disparities in how basic education is delivered, then the fall-out will be seen in the growing number of ill-educated youth, unemployed youth, a dissatisfied and an angry youth. They constitute a collective of young minds that, for their required tenure through high school sought and relied on their elders' guidance and support, and when found lacking, will resent how society has shaped them.

The acknowledgement of the learner, first and foremost, as a human being worthy of being seen, heard and valued gave rise to the ASF Shared Value Partnership Strategy (2019), which underpins how we engage with our corporate partners. Towards the last quarter of 2021, the ASF saw three such new partnerships start to take shape:

## Mark Shuttleworth | here be dragons

- ✓ 144 bursars will receive financial support in 2022 – in addition:
- ✓ 29 Gr9 bursars will receive Subject Choice Advice Booklets
- ✓ 48 Gr10 bursars will receive Career Guidance Workbooks
- ✓ 27 Gr12 bursars will receive the NSFAS Online Application Guide
- ✓ 27 Gr12 bursars will receive additional funds for mobile data
- ✓ 72 Gr12 bursars will be given the opportunity to attend a year-long Computer Literacy Programme 😊
- ✓ Special awards in recognition of academic excellence

*"There are no specific conditions attached to these donations and we simply wish that the ASF continues to operate as it does, and occasionally let us know how things are going."*



*For the endorsement, your trust and warm generosity.*



- ✓ 100 bursars will receive financial support in 2022 – in addition:
- ✓ 21 Gr9 bursars will receive Subject Choice Advice Booklets
- ✓ 26 Gr10 bursars will receive Career Guidance Workbooks
- ✓ 34 Gr12 bursars will receive the NSFAS Online Application Guide
- ✓ Special awards in recognition of academic excellence
- ✓ Sufficient funds were made available to convert a classroom into a computer lab comprising computer desks and chairs, 35 workstations, a server, printer, overhead projector and smartboard 😊

*"We have no desire to dictate how funds are to be spent. Recognising the ASF's 50-year track record, you may use your discernment in how best to make use of the funds made available."*



*For the endorsement and your amazing support of the work of the Fund.*



Terebinth Capital learnt of the ASF in October 2021. We presented the work of the Fund to the dynamic all female Management Team and by the time we arrived back at the office, some 50min later, a generous donation had already been transferred into the ASF bank account, along with the pledge to come more fully on board as a Shared Value Partner in 2022 😊. The funds immediately made available enabled us to ensure that:

- ✓ 50 bursars received financial support in 2021 – in addition:
- ✓ 13 Gr9 bursars received Subject Choice Advice Booklets
- ✓ 7 Gr10 bursars received Career Guidance Workbooks
- ✓ 9 Gr12 bursars received the NSFAS Online Application Guide



*We are super excited and look forward to nurturing the relationship.*

Our corporate partnerships are exciting, generous, heart-warming, affirming of the work of this Fund, but no more than the commitment of the ASF family of individual donors who remain so very loyal, compassionate and continue giving. Some, by force of circumstances have reduced their donation, but they have never stopped, continuing to support their bursars with letters and gifts. On behalf of these young learners and of their families, we say Thank you – may you, in return, be richly blessed.

Keeping our communication with particularly our young bursars running smoothly, has become ever more challenging; not only with numerous post offices closing their doors, but with many of the areas where our learners reside being deemed too “high risk” for postmen to deliver the post.



The Bursary Rep stationed at each of our schools now play a CRUCIAL role in keeping the administrative wheels of the ASF turning. With the ASF-funded schools and the learners’ ongoing lack in access to technology, we had to be creative in application forms, report cards, additional printed resources which were sent to and received from our bursars. Fortunately, with there being a branch of Pep Stores in the townships where our schools are located, we are able to make use of their speedy and reliable courier service in getting documentation to and from our bursars via the ASF Bursary Reps. Until such time as our schools acquire the technology resources that will give our learners access to acquire the skills, the ASF is unable to fully automate its administrative processes. Again, this highlights how vitally important the ASF’s partnership with the likes of Mark Shuttleworth and the Bermuda Foundation is in bringing these technology resources to our bursars.

This also emphasises how vitally important the continued support of our individual donors is; how vitally important it is that you share the work of this Fund with family and friends; how vitally important it is that they understand the transformative impact your support brings; and how vitally important it is that they be invited to share in and continue your legacy of giving. A quick email to [Miche@asf.org.za](mailto:Miche@asf.org.za) will get the ball rolling.



### A VERY, VERY SPECIAL WORD OF THANKS

Must go to Hanri Pieterse, CEO of Oxford University Press (SA). Hanri personally funded the Editor and Typesetter that brought our Covid-19 Book into being. Her belief in and amazing support of this project, that brought the personal reflections of 150+ learners to life, was instrumental in their being seen, being heard and experiencing a modicum of healing, hope and reassurance of a brighter future

## National Senior Certificate Examinations: Results of the Class of 2021

<https://pmg.org.za/committee-meeting/34119>

[/?utm\\_source=transactional&utm\\_medium=email&utm\\_campaign=minute-alert](https://pmg.org.za/committee-meeting/34119/?utm_source=transactional&utm_medium=email&utm_campaign=minute-alert)

“The Minister of Basic Education, Ms Angie Motshekga, remarked that Learners had demonstrated their resilience. The Department called this class “the phoenix” – a mythical bird that burns but has the ability to rise from ashes; it used that image to motivate the class of 2021.

### *Profile of the Class of 2021:*

- ✓ It was the largest class, to date, to sit for the NSC examinations.
- ✓ This group was tremendously disadvantaged by the 2020 lockdown during their Gr11 year. The last two years of their schooling have not been normal by any measure.
- ✓ As much as lost time was recovered through measures such as the shortening of the June vacation, the cancelling of the June examinations in 2020 & 2021, and the extension of term 4, these learners had to endure major psychological, social and academic hurdles

### *2021 Unique Educational Context – this included:*

- ✓ Rotational attendance in 2020
- ✓ Inadequate exam exposure
- ✓ Trimmed curriculum
- ✓ At-home learning and need for psychosocial support
- ✓ Amended Curriculum Assessment Policy Statement (CAPS) Section 4
- ✓ And learning under COVID-19 conditions.”

The class of 2021 faced the daunting challenge of learning under COVID-19 conditions for two consecutive years. Having experienced two years of chaos and uncertainty; for many, receiving their matric results will be a cause for celebration. But while some will go on to study at tertiary institutions, others will be forced to immediately enter into a highly competitive job market. Here, more challenges await our young, inexperienced matriculants who will be competing in a labour market where unemployment is sitting at nearly 35%.

The African Scholars Fund can't change the whole world, and neither can you. But together we have the opportunity to, one by one, transform young lives; impact on family circumstances and ultimately invest in community upliftment through education. We extend our gratitude to every friend and supporter of the work of the ASF, and look forward to nurturing our continued journeys.

**Eliza James**  
**Director**

## **FINANCIAL REPORT**

### **For the year ended 31 December 2021**

I am pleased to compile my first financial report, as the newly appointed treasurer of the African Scholars Fund. A year ago, I hadn't been privileged to hear of the ASF and the amazing work that they do. But since becoming involved I am extremely proud to be associated with an organisation that is doing so much good and is managed and staffed by such a competent and dedicated team. I look forward to the time I will spend associated with the ASF!

A huge thank you is due at this time to my predecessor, Stephen Flesch, for his many years as the treasurer of ASF. His diligent oversight of the expenditure and investments allowed the organisation to assist many bursars. I am told that Stephen volunteered countless hours at the office in working through learner files, authorising not only their first and second payments, but also signing off on the monthly creditors. On behalf of my fellow-trustees and the ASF staff, please accept our sincere gratitude, Stephen.

We were again fortunate to end the 2021 financial year with a small surplus of R323 000. However, this is largely due to the profit on the sale of investments, amounting to approximately R600 000, and a donation of R765 000 received in December from the Bermuda Trust. The gains on the sale of investments are not operational gains and cannot be expected to be recurring. Every effort is made to run the organisation sustainably, without needing to tap into the capital value of the investments. Furthermore, the donation from the Bermuda Trust was received in December 2021, and it is largely meant for learner support that will be provided in 2022 onwards. Without this generous donation we would have ended the year with a deficit of about a million Rand.

We are grateful to our asset managers for their wise management of our investments. They were able to realise some of the gains in the value of the investments, thanks to the general performance of the markets, by selling some investments at the right time, and reinvesting the proceeds into other well-performing equity.

The donation from the Bermuda Trust is part of the new Shared Value Partnership (SVP) arrangements that are being promoted. Where corporate or other large organisations are interested in becoming donors, they are invited to be part of an SVP. They choose a school where the ASF is already supporting learners, and they provide funds on an ongoing basis to cover the learner support for all learners at the school, and usually also fund additional support at the school. Examples of this other support is the building of a computer lab or a specific literacy program. This SVP program is envisaged to provide greater financial stability to the ASF, as well as greater learner support.

The donations for the year, apart from the Bermuda Trust donation, were below the amount budgeted. However, the office staff were able to save on some costs that were able to compensate for the budget deficit.

Where costs were not cut, though, is in the learner awards and support, which is the core business of the ASF. The learner awards, learner support and project expenses (linked to SVPs) increased by 37% compared to 2020, but were only 16% higher than 2019. In 2021, due to the ongoing effects of Covid-19, and the impact on learners, the decision was made to pay all learners the full award, regardless of their academic performance. Although this increased the total cost, it made a significant difference in the lives of the learners.

Our balance sheet has not changed greatly, apart from the increase in the value of the investments because of a general increase in the market, as mentioned previously. Although the increases in the fair value of the investments are not used for operational purposes, the income generated from the investments is. The increased level of the value of the investments has led to slightly higher investment income. We are also grateful to own the property in Fleming Rd, Wynberg which provides suitable office premises, gives security of tenure, and saves on rental costs which had kept escalating every year.

We have once-again budgeted for a deficit for 2022 as we believe it is imperative at least to maintain the current level of support for our bursars. However, as our donors continue to loyally support us, and as we continue to recruit partners for our SVPs, and more actively fundraise in both South Africa and the UK, we hope we will be able to reduce the level of the deficit, and come to a time where we can forecast a modest surplus that can ensure we build up reserves to ensure sustainability into the future.

Thank you for your continued support that allows this extraordinary work to continue!

**Shelly Herbert**  
**Treasurer**

Let us help you manage your donation - enquire about our Donor  
Debit Order Facility

**Abridged Financial Statement for the year ended 31 December 2021**  
**Zena Stanfliet – Accounts Manager**

**INCOME STATEMENT**

	<b>2021</b>		<b>2020</b>	
<b>INCOME</b>	<b>R'000</b>	<b>R'000</b>	<b>R'000</b>	<b>R'000</b>
Bequests	10		780	
Donations (Incl. donations from UK)	3 476		2 363	
Contribution toward salaries	400		380	
Net Investment Income	351	4 237	308	3 831
<b>EXPENDITURE</b>				
Learner Awards	2367		1625	
Learner Support	704		755	
Project Expenses	241		44	
Donor Liaison, Marketing/Fundraising	573		752	
Management Costs	190		183	
Finance & Human Resources	379		366	
Property Running Costs	<u>84</u>	<u>4 538</u>	<u>115</u>	<u>3 840</u>
Operating Surplus/(Deficit)		-301		-9
Surplus on Sale of Investments		<u>624</u>		<u>152</u>
<b>SURPLUS/Deficit for the year</b>		<u><u>323</u></u>		<u><u>143</u></u>

**BALANCE SHEET**

**ASSETS**

Property	2700	2 700
Investments	11 442	9 925
Cash-on-hand	<u>489</u>	<u>373</u>
	<u><u>14 631</u></u>	<u><u>12 998</u></u>

**ACCUMULATED FUNDS**

Capital Trust Fund	60	60
General Fund	10 346	9 907
Revaluation Reserve	4 183	2 973
Special Funds	<u>0</u>	<u>1</u>
	14 589	12 941

**LIABILITIES**

Accounts & other payables	27	34
Provisions (Leave Accrual)	<u>15</u>	<u>23</u>
	<u><u>14 631</u></u>	<u><u>12 998</u></u>

**Copies of our audited financial statements are available at the office on request.**

# ***AFRICAN SCHOLARS' FUND (UK)***

*UK Address: 10 Lurkins Rise, Goudhurst, Cranbrook, Kent, TN17 1ED*

*SA Address: P O Box 18097, Wynberg, Cape Town, 7945, South Africa*

*Tel: 01580 211550*

*email: uk@asf.org.za*

Charity Number 1070406

---

## **CHAIRMAN'S REPORT FOR 2021**

It gives me great pleasure to report again on the activity of the UK branch of the ASF. Individual contributions and Gift Aid reclaimed during the year totalled over £24,000. Of this income, a generous £15,000 came from Mark Shuttleworth as the first of his 3-year commitment in response to a Shared Value Partnership Proposal submitted by the ASF SA branch.

We offer our thanks to all our supporters who provide encouragement and finance for the work of the Fund. In particular, we are grateful for the additional donations from many following the publication of the 50<sup>th</sup> Anniversary Booklet.

It is also a pleasure to welcome Peter Roberts as a Trustee to the ASF in the UK. He brings a dept of experience in working with many charitable organisations in SA. He is now based in England, and I know his enthusiasm and contribution will be hugely beneficial to the growth of the work of the Fund specifically in the UK.

Sandy Elsworth  
Chairman, Board of Trustees  
African Scholars Fund (UK)

## **STATEMENT OF ACCOUNTS TO 31 DECEMBER 2021**

INCOME (Direct UK):	Donations Received	£8,930.29	
INCOME (Via SA):	Mark Shuttleworth	£15,000.00	
	Gift Aid reclaimed	£1,662.25	
	Interest	£0.37	
	Sub-total Income		£25,592.91
EXPENSES:	Bank charges	£30.50	
	Administration	£0.00	
	Sub-total Expenses		£30.50
AVAILABLE FOR DISBURSEMENT:			£25,562.41

**The Charity has no assets or liabilities.**

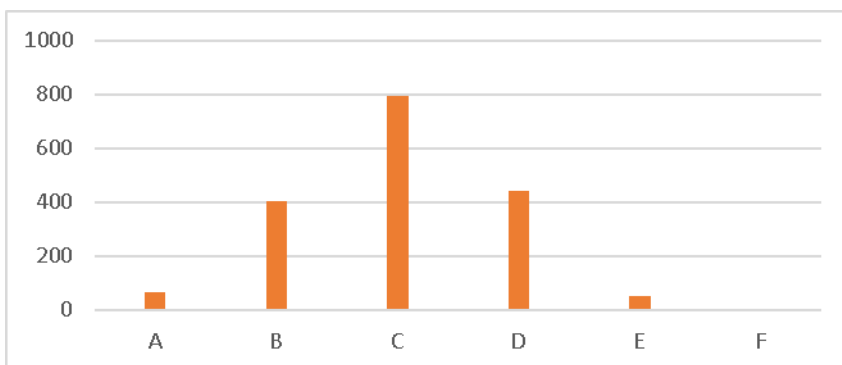
## SCHOOL REPORT

### Nontuthuzelo Mnyaluza – Schools Portfolio Manager

2223 Bursars received their 1<sup>st</sup> payment at the start of the school year. 29 Bursars did not submit their June results; hence the remaining 2194 bursars received their 2<sup>nd</sup> payment. The 1<sup>st</sup> and 2<sup>nd</sup> payments totalled an amount of R2 368mil. 422 Bursars were in their last year of schooling (matriculants). The distribution of funds was as follows:

Province	Number of Bursars	Percentage
Total Number of Bursars	2223	
Eastern Cape	905	41%
Western Cape	1254	56%
Northern Cape	64	3%

#### OVERVIEW OF OUR GRADE 8 TO GRADE 11 COHORT OF LEARNERS



<b>A (80% – 90%)</b>	:	64
<b>B (70% - 79%)</b>	:	404
<b>C (60% - 69%)</b>	:	793
<b>D (50% - 59%)</b>	:	441
<b>E (40% - 49%)</b>	:	53
<b>Below 40%:</b>		6

**1755/1761 = 99% Pass Rate**

## SPECIAL AWARDS AND ADDITIONAL SUPPORT

**Mears Award (Top grade 10 learner)**, was presented to:

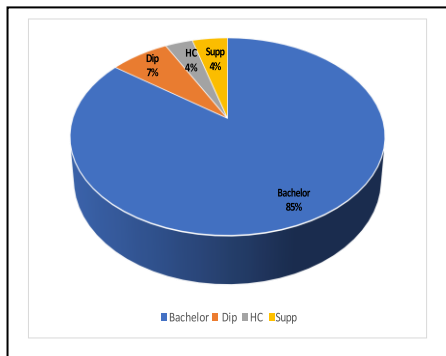
- Gagaza Nkazimlo at Hector Peterson: (89% average)
- GEZA Lona at Chris Hani (achieved 86% aggregate).

**Grade 9 Subject Choice Advice Booklet, distributed to 579 Gr 9 Bursars:** (guides the learner to make informed decisions on subject choices and the impact on their choice of career; it highlights the difference in completing the Further Education and Training [FET] phase at school or at college level).

**Grade 12 NSFAS Online Application Guide, distributed to 422 Gr 12 Bursars:** (this simple step-by-step and user-friendly guide enables the learner [whether computer literate or not] to navigate the NSFAS website and successfully complete the online application for tertiary funding).

## MATRIC RESULTS OVERVIEW

422 Matriculants received awards in 2021. At the time of going to print, 262 of our now past-bursars submitted their final results (62%). Of the 262 reports that we received, we were able to determine that 229 Obtained Bachelor Passes, 17 were eligible to apply for further study toward a Diploma, 7 could engage in study toward a Higher Certificates and 9 would be given the opportunity to write a Supplementary Exam.



## WHERE ARE THEY NOW

**132** Of our matriculants took the time to inform us of their current endeavours:

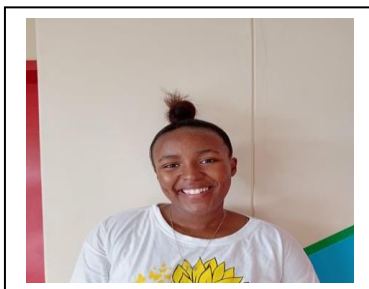
**105** Very excited learners have been accepted at various institutions of higher learning and we look forward to their continued journey toward success. **5** Matriculants have decided to write their supplementary exams in an attempt to improve their overall result. **22** Of these, now young adults, have informed that they are not able to engage in further study and will immediately be seeking some

means of employment, and 1 young matriculant secured a Learnership at the Western Cape Department of Health.

### MATRIC HIGHLIGHTS



**Ntando Lalela** proudly showing off his statement of results with his granny. He was the top matriculant (class of 2021) at Manyano High School in Khayelitsha, Cape Town. Ntando obtained six distinctions with an overall aggregate of 86%. He is now studying Biochemistry at the University of Cape Town.



**Nanda Mzayiya** matriculated from Mzomhle High School in East London (Mdantsane). She joined the ASF family in 2018 when she entered Grade 9. Nanda passed her matric with a 79% aggregate and obtained 3 distinctions. She is now pursuing her Chemical Engineering studies at the University of KwaZulu Natal.



**Bophelo Segolodi** matriculated from Tetlanyo High School in Kimberley. He was amongst the top matriculants who received the Ministerial Award from the MEC for Education in the Northern Cape. Bophelo Achieved an 85% aggregate with 6 distinctions. He is now pursuing his studies at the University of Stellenbosch.

**Emihle Mamkeli** joined the ASF in 2018 when she was in Grade 9. She's had a most challenging high school journey, but she managed to pull through and obtained a Bachelor Pass at the end of her matric year. Her passion lies in the



Health/Medical field. Unfortunately, she did not get space in the faculty of her choice and was offered placement for another course of study which she wasn't certain about. She then applied for a Learnership programme at the Western Cape Department of Health and when she got accepted, she was caught in between embarking on a course of study that she did not like or taking up the learnership which is in her field of interest. We advised her to go for the one that she was most passion about, and that would serve as a foundation in the build up towards her much desired medical career.

### **MATRICULANTS THAT RECEIVED SPECIAL MINISTERIAL AWARDS**

- **Lutho Mngqibisa:** Matriculated from COSAT in Khayelitsha. He achieved a commendable 100% in Information Technology and distinctions, too, in his other 6 matric subjects. He is now pursuing BSc Computer Science at the University of Cape Town
- **Khanyisa Tata:** Hails from Imizamoyethu SSS in Thembalethu, George. She obtained distinctions in all her 7 matric subjects. She is now studying toward her Bachelor of Accounting at the University of Johannesburg.
- **Vive Msolo:** Matriculated from Harry Gwala Secondary School in Khayelitsha, Cape Town. She joined the ASF family in 2019 when she was in Grade 10. She obtained distinctions in all her 7 matric subjects and is now studying Dance at the University of Cape Town.
- **Mzekelo Tukushe:** Matriculated from Chris Hani Arts and Culture High School, Cape Town. He was the top matriculant at his school (Class of 2021). Mzekelo obtained an 87% aggregate with distinctions in all his subjects. He is also pursuing Dance studies at the University Cape Town.

## EXCERPTS FROM “THANK YOU LETTERS”:

*“I am writing to thank you for the 1<sup>st</sup> payment of R700. I paid for my school pledge and then I bought a raincoat for rainy days. I saved some of the money for when I am in need. I am keeping up with my schoolwork and practising math every day. I am even taking afternoon classes to practise and when I get to the library, I study my physics and geography. I do at least 2 or 3 subjects a day to improve my knowledge. My other interests: I want to get a sponsor to support me with my sport. I’m a cyclist, but I only ride on weekends. It is just for fun and exercise with my friends, but I only free-ride (just like Fabio Wibmer). I want to be a surgeon when I grow up and that is why I am studying every day. I am looking forward to the 2<sup>nd</sup> payment, because it helps a lot.” Anethemba Pelekwa – Gr10*

\*\*\*\*\*

*“Thank you for the scholarship you gave me – the money helped a lot. I bought a matric jacket that cost R500, paid R80 for a school trip about career opportunities and universities and I bought school socks. The money helped me so much. I want to buy a book to improve my English because I only got level 4 in term 1. You have helped me so much, because my Mother was so stressed about where she would get money from to help me. At home we live with the Sassa grant that my little brother gets. It is very little for us and we can’t buy something to eat. September the school will have a camp, I don’t know where I can get the money from, because I have to buy clothes and toiletries for myself.” Knayisa Mose – Gr12*

\*\*\*\*\*

*“I would like to take the time and greet you. It’s my pleasure to write this appreciation letter. I am very thankful for the money you have granted me; it made a huge difference in my home’s financial situation. To name a few: I decided to buy myself new school shoes and some textbooks which came off as being effective in my academic results. I also bought some drawing equipment, because I enjoy drawing and having a different language of expressing my thoughts. It will be my honour to also thank you for the good advice you gave us in the pamphlet. That completely boosted me to work more harder in my studies. I thank you.” Sinesipho Ralushe – Gr10*



## DONOR REPORT

### Miche Nicholas – Donor Portfolio Manager

The Trustees wish to thank our regular sponsors and donors for their continued support for the period **1.01.2021 to 31.12.2021**.

(Past bursars, now donors, are in bold)

ABE BAILEY TRUST	Trust, Hillary & Dorothy	GARDENER, Mr & Mrs JB
ABRAMOVITZ, Ms C	CHISHOLM, Mr & Mrs T	GARLICK, Mrs A
ACKERMAN FAMILY	CLEMENTS, Ms K	GLOBAL GIVING
Educational Trust, The	CORDER, Prof H & Ms C	GOLDBERG, Mr M
ALLSOPP, Mr A C	COUSINS, Mr & Mrs D A	GREENE, Prof & Mrs J R
ALLSOPP, Karen	COXON, W & B	GRIMBEEK, Ms J
ANDREW, Mr N & Mrs R	CROCKETT, S	GROGAN, Mr & Mrs.
ANDREW, Mr K	CTP LIMITED	GROGAN, Mr. T
ANON (Cape Town)	DAVEY, Mr B R	HALL, Suzanne
ANON (Rondebosch)	DAVID GRAAFF	HEALE, Mr J
AUTHORS, EPIDEMIOLOGY,	Foundation	HENSHILWOOD TRUST
“A Research Manual for SA”	DAVIDGE, Mr & Mrs J	HERRBSTEIN, D M
BADENOCH, A C	<b>DAYIMANI, Ms A</b>	HOSFORD, Ms J
BAGLIONE, G	DE LISLE, Mrs M	HOWIE, Justice & Mrs C T
BAIGRIE, Drs R & C	DELOW, SIR Franklin	IRLAM, Mr and Mrs J
BARNETT, Ann	DERHAM, Mrs C	IVEY FAMILY
BARNETT, Mrs E A	DIERICH VOIGT MIA (Pty)	Trust
BATTINO, Prof R	Limited – PATHCARE	JAMES, Ms E
BEATIE, Jenifer	DIN TRUST, The	JANISCH, Mr & Mrs M W
<b>BENJAMIN, Dr. R</b>	DOUGLAS JOOSTE TRUST,	JARDINE, Dr & Mrs W I
BERMUDA Foundation	The	JENSEN, Mrs G
BEVIS, Mrs A	D.RICH PLUMBING CC	JOBSON, Mr T
BENTON, Megan	DUNCAN FAMILY TRUST,	KEEN, Dr & Mrs G A
BERMAN, F	The Francis	KENT, Ms P
BERMAN Family,	DUNLEAVY,Chloe	KILANI, Advocate J
<i>Joel, Marc, Sam, Robert &amp; Lucy</i>	DUSTERWALD, P B	KING, Mrs Estelle
BIKE TOWN AFRICA	DURHAM, B J	KLEIN, Mr & Mrs E
BLOCH PROPERTIES	<b>DYASI, Mr J M</b>	KNIGHTS, Mrs S
BOURNE, Prof Susan	EAGLE, Garth & Gail	KOJIMA, Dr M
BRADLOW, A P	EHRlich, Prof R	KRETZMAR
BRAND, Dr A	EINHORN, Dr F and Mrs C	LEARY, P M
BRATHWAITE, Ms C	EINHORN, E	LEMANSKI, C L
BRIENZA, Ms G	ELSWORTH, Dr M	LIDDLE, Mr & Mrs C
BUDLENDER, G	EVERINGHAM, Prof & Mrs G	LINDER, Mrs F
BURGER, Ms E	FACSURE FINANCIAL	LORIMER, Mrs P
BURNETT, DR.Phillip	Management Services	MADDEN, Dr
BURTON, Mr.G & Mrs.M	FARLAM, Justice & Mrs I G	MALHERBE, Mr & Mrs P
CAMBRIDGE UNIVERSITY	FERGUS, Dr E	MALHERBE, Mrs V C
PRESS, Royalties	FLESCH, Mr & Mrs W J	<b>MANJEZI, Ms K M</b>
CARTER FAMILY	FOLB, Prof & Mrs P	<b>MANTLA, Mr M</b>
Charitable Trust	FOSKETT, Ms K	MARKS, Ruby
CARTER, Mr & Mrs D E M	FOX, Beryl	(Ambassador)
CHAMBERLIN CHARITABLE	FUCHS FOUNDATION	MAARSINGH Mr H & Mrs U
Trust, The Elsie & Allan	Carl & Emily	MAXWELL & SPARK
CHAMPION CHARITABLE	GALLACHER, Prof J	MCCORMICK Charitable Trust

MCKENZIE, F  
McNAMARA, Dr & Mrs J D  
MELVILLE, Mr & Mrs D R  
MENTOR, Dr K  
MICHELL, Mrs S D  
MIDDELMANN, Mr M.J. (in  
honour of his parents who were  
early supporters of the ASF)  
MILLAR, Mr J R  
**MOIKWATLHAI, Mr K**  
MOLL, Dr P  
MOUNTFORD, Ms S W  
**MPHAKAMA, Mr B**  
NAYLOR, Ms M  
NG HENSILWOOD TRUST  
NOAKES FAMILY Charitable  
Trust  
NUSSBAUM FOUNDATION,  
The Rolf-Stephan  
**OLIVER, Mrs L**  
OOSTHUIZEN, Ms L  
ORPEN, Mr & Mrs C M W  
OWEN, Mrs K  
PETROMONITOR AFRICA  
PIETERSE, Ms S A  
PIETERSE Mrs. S  
PIETERSEN, Mrs E M  
PRICE, Mrs A K  
PRICE, DR M & PROF D POSEL  
PROBYN, Mrs M J

RABINOWITZ, Mr B  
RAMSAY, Mr & Mrs A  
REITZ, Mrs E  
ROBERTS, PETER  
ROBERTSON, Dr G & Dr J  
ROBERTSON, Dr N R C  
ROBINSON, Mr & Mrs A M L  
ROGERS, Mr O & Mrs S  
ROLLO, Mr & Mrs M  
ROSEBANK SPIRITUAL  
Development Group  
ROSSINGTON, Mrs S  
RUNDLE, Margaret  
EST-Late Mr. Rundle  
SCHAUERTE, Dr A  
SEBITOSI-VAN JAARVELD,  
Dr S  
SHAH, Mr R  
SHEAD, Mrs. KIM  
SHUTTLEWORTH,  
Mark  
SINCLAIR, Mrs N  
SMALBERGER, Justice J W  
SMITH, Mr Z & Mrs S  
SOAN, Mrs K and family  
**SOLOMBELA, Mr L**  
SPARK, Mellony  
SRK Consulting  
STANFLIET, Mrs Z  
STARKE, Mrs E  
STEYN, Mrs J E  
STILWELL, L

ST OLA's TRUST  
ST STEPHENS CHURCH  
(Pinelands)  
STONE, Tanya  
ST THOMAS CHURCH  
(Rondebosch)  
SULCAS, R  
TESTER, Sue  
TEREBINTH CAPITAL  
THOMPSON, Ms V  
TIPPING, Ms N  
TUFFIN, Mr P  
TURNER, Mr J A G  
VAN DER SPUY, Emeritus  
Professor, Z M  
WATKYNS, Councillor B  
WEBB, Prof J & Mrs A  
WEDEPOHL, Dr & Mrs P T  
WILSON, Mrs E  
WILSON, Mr M  
WIXTED, Mr B & Mrs M  
YAFFES, Chloe  
YAFFES, Mia  
YALEZO, J P  
YATES, Ms. Y

### IN MEMORIAM - 2021

#### **Dr. Robertson, Dr. Saunders, Ruth Allsopp, David Andrew Cousins and Mr. Rundle**

These were supporters of our work, faithful in the giving of money and encouragement.  
May they rest in perfect peace. Our sympathies go to their families and friends.

## **Tax Exemption & Employment Equity (EE)**

- \* All donations received are fully tax deductible PBO 130002416. A Section 18A receipt will be provided when a donation is made.
- \* Advance your EMPLOYMENT EQUITY RATING by donating to our organisation. On request our NPO Certificate, SARS 18A Tax Exemption Certificate, Financials or Constitution will immediately be forwarded to you.

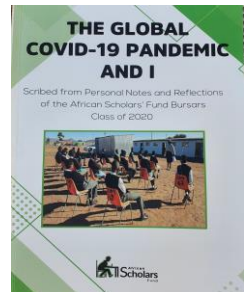


A very special **Congratulations** to our loyal donors **Lara & Rhys Hodkinson** on their marriage. We wish them a union filled with Joy, Love and Happiness. Rhys & Lara, instead of doing a gift registry, suggested their guest donate to their chosen charity - the African Scholars Fund. We are extremely grateful to each and every one who contributed so generously.

We would like to take this opportunity to also wish **Mr. and Mrs. Davidge on their 14<sup>th</sup> Wedding Anniversary**. On the 19<sup>th</sup> April 2008, they tied the knot and too suggested their guests donate to the African Scholars Fund in lieu of wedding gifts. They remain loyal donors and supporters of the Fund.

## A GENTLE REMINDER

- ✓ To contact the office should you wish to obtain a hardcopy of our Covid-19 Book (R20 per copy).
- ✓ Stories from our schools, learners, projects and alumni appear on our website, and will be updated from time to time, to be a living history of the ASF – <http://asf.org.za/>
- ✓ To view short 4 – 7min ASF video clips, visit our YouTube Channel – [ASF Youtube Channel](#)
- ✓ To partner with the ASF, contact – [eliza@asf.org.za](mailto:eliza@asf.org.za) OR [Miche@asf.org.za](mailto:Miche@asf.org.za)



## Please do follow us on our Social Media platforms;



<https://www.youtube.com/channel/UC6xXQyBq9N2b3XM1z5V9OIw>



<https://www.facebook.com/African-Scholars-Fund-125623640814262>



<https://www.linkedin.com/company/7067294/admin/>

## LONGSTANDING PARTNERSHIPS

It needs to be acknowledged right at the out-set that every one of these partnerships have been nothing short of amazing and their impact life-changing. These donors have found resonance with the ASF not merely because it seemed the right thing to do, but because the work of this Fund provides opportunity for young people that seek to become self-reliant, self-motivated and sufficiently empowered to confidently stand at the helm of their own ships.



This amazing partnership kicked off in 2017 with two primary objectives: (1) inculcate a love of mathematics and (2) increase the number of learners doing pure maths. With these two objectives having been met, the shift in focus is now to ensure that learner results will reflect a continued upward trajectory. Pathcare continues to provide funds for the mathematics intervention at Chris Hani High School (Khayalitsha) comprising Educator salary and educational camps.

*Thank you so very much for your commitment, your care and your continued generosity*



We are 8 years into the partnership with Biketown Africa and they have become friends of note. To date 825 learners at our rural schools, predominantly in the Eastern Cape, each received a bicycle, safety helmet and repair kit. These past two years saw Covid bringing the bike handovers to a (temporary) halt, but Biketown's generosity nonetheless continued: they not only funded the printing of our Covid-19 book, but also made funds available towards operations to assist in keeping the organisation afloat during these trying times, and offered financial support to a large number of ASF bursars in the Eastern Cape.

*Thank you David, Gigi and fellow Biketowners for your compassion, your care, your continued support and your amazing friendship*



It's been 9 wonderful years of gentle encouragement, unfailing support and an authentic friendship offered by Ms Ruby Marks – South Africa's Ambassador to Benin. In her personal capacity, she annually supports up to 40 ASF learners and when in the country makes every effort to meet with, encourage and personally present her *Life Planning Motivational Workshop* to her cohort of Gr12 bursars. This year, in addition to offering financial assistance to two Gr12 learners having to fend for themselves (no parental support), Ambassador Marks also provided funding for a Nature Conservation student studying at the Nelson Mandela University.

*It would not be an exaggeration to say you embody the essence that was former President Mandela. You are an amazing exemplar to our bursars and your continued support of the ASF is acknowledged with much gratitude*

## VOLUNTEERS AND VISITORS TO THE OFFICE ●



Margaret & Edna, ASF volunteers



The Boyd's, longstanding UK donors



Mr Irlam, longstanding donor



There are a number of wonderfully generous donors who wish to remain anonymous. Please know that your compassion and continued support of the learners in our care is acknowledged with much gratitude.

## STAFF MEMBERS:



**Eliza James:** Director.

**Zena Stanfliet:** Accounts Manager - manages accounts, bursar payments and donor debit order collections.



**Miché Nicholas:** Donor Portfolio Manager – manages the relationship with our individual ASF donor base and assists the Director with Social Media and Corporate partnerships.



**Nontuthuzelo Mnyaluza:** Schools Portfolio Manager - manages the School & Bursary Rep portfolios, learner database and bursar awards.



**Nicole Jafhta:** Administrative Assistant – manages the front office and supports the Schools Portfolio Manager.



**BOARD OF TRUSTEES:** Prof Geoff Everingham (Chair), Mr. Thurston Brown, Prof Hugh Corder, Mr Barry Hart, Mrs. Shelly Herbert, Mrs. Wendy Moul, Dr Ronalda Benjamin, Mr. Moshe Apleni & Ms Eliza James (Dir).

**PATRON:** Dr Margaret Elsworth.

**UK OFFICE:** Sandy Elsworth (Chair), Peter Roberts (Trustee)