

# AFRICAN SCHOLARS' FUND

An Educational Trust registered with the Master of the High Court: NPO 002-838

---

PO Box 18097, Wynberg 7945 T: +27 21 689 9094 / 9431 F: +27 21 689 9240  
E: [office@asf.org.za](mailto:office@asf.org.za) [www.asf.org.za](http://www.asf.org.za)



Zimeleni Junior Secondary School, Whittlesea in the Eastern Cape

# ANNUAL REPORT 2020 / 2021

## MISSION STATEMENT

*The African Scholars' Fund, through awards and guidance, assists promising young schoolchildren from the most-needy homes to complete their secondary education.*



## BANKING DETAILS IN SOUTH AFRICA

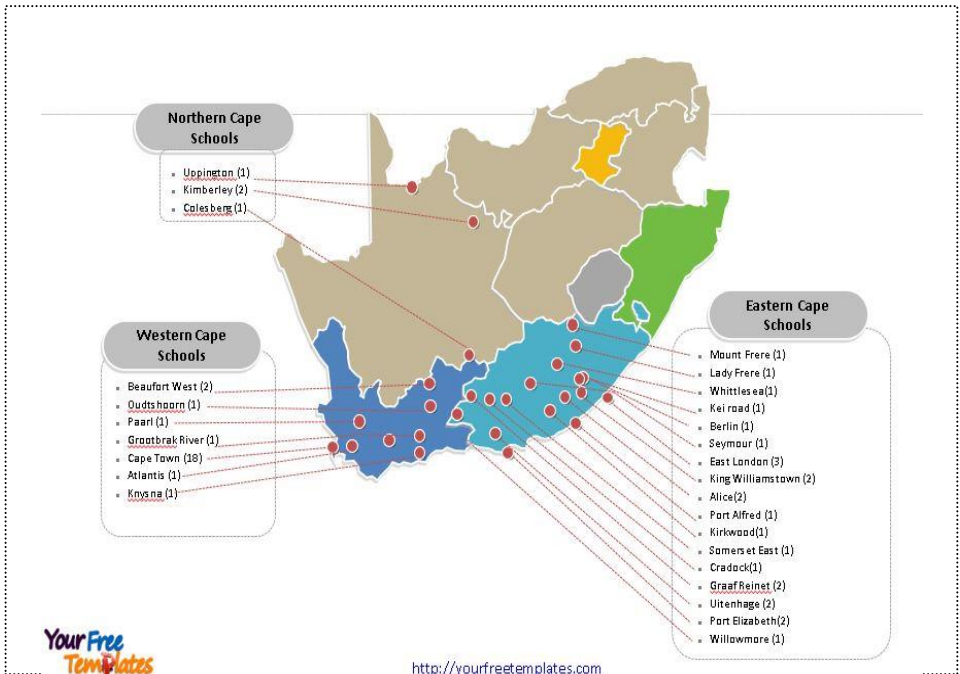
Bank: Standard Bank of SA Ltd  
Account type: Current account  
Account number: 07 140 410 4  
Branch code: 02 50 09  
Swift code: SBZA ZAJJ (Rondebosch)

## BANKING DETAILS IN THE UK

Bank: Natwest (Sort Code 55-70-13)  
Account name: African Scholars Fund  
Account number: 163 883 64

**\*Very NB:** when making a deposit/eft, please use your full name as reference, since enquiries made to the bank attract additional costs. Also note that banks no longer accept cheques.

## Our areas of operation are the Northern, Western and Eastern Cape



In keeping with our mission statement of assisting promising young schoolchildren from the most-needy homes to complete their secondary education, the ASF continues to support on average 2300 bursars annually at schools that are cooperative and compliant with our requirements. Some years ago, we accepted any child from any school, but the schools' non-compliance presented much challenge since we could not always confirm that the learners received their funds, meant to be disbursed via the school, nor was there cooperation in making the mid-year and end-of-year reports available. We continue to serve promising bursars from the most-needy homes, and currently work with compliant schools and in the:

*Northern Cape:* 100% of the schools on our list are located in the more rural areas.

*Western Cape:* 4% of the schools on our list are located in the more deeply rural areas, with the remainder located in urban/township areas.

*Eastern Cape:* 62% of the schools on our list are located in the more deeply rural areas, with the remainder located in urban/township areas.

## CHAIRMAN'S REPORT

As I reflect on a year fraught with difficulties, my immediate reaction is to express thanks to those who have helped African Scholars' Fund weather the year and, despite the difficulties, maintain support to our bursars, for whom the past year has been unusually demanding.

Firstly, our donors have been consistent in continuing to provide financial support, and in some cases increased contributions in the teeth of the economic setbacks that have beset our country. We are enormously grateful for this and for the sensitivity to our bursars' circumstances which this commitment represents. Thank you so much!

Secondly, our staff have adapted with determination, working much of the time from home while maintaining a presence in the office on a roster basis. Technology has enabled us to remain in contact with our bursars and provide help and encouragement throughout the various phases of 'lockdown' – more of this in the report of our Director, Eliza James, to whom special thanks are owed for managing our response to the crisis so deftly.

Thirdly, our trustees have continued to meet, thanks in part to Zoom. Since the end of 2020, three of them have decided to move on. Our treasurer, Stephen Flesch, has relocated to the Southern Cape, and John Webb and John Gardener, both past chairmen, felt it right to stand down rather than commit to another five-year term as trustee. All three have given sterling service, each for around twenty years; we shall miss their wise counsel, so freely given, and wish them all the best for the future, with much gratitude and appreciation.

Towards the end of 2020 and into the current year – and following last year's celebration of 50 years existence and the need to adapt to the Covid pandemic – the trustees have been applying their minds to the long-term sustainability of the Fund. The point of departure for this has been to revisit our strategic direction; having done so, we are convinced that the present practice of supporting our bursars financially and by providing further assistance by other means such as advising on subject choice, is the right one. We will persevere with that, growing numbers as resources permit, liaising with other organisations where appropriate and avoiding duplication of effort.

Our efforts at growing Shared Value Partnerships with corporates during the past year have stalled somewhat; we will continue to explore these possibilities during the current year and then take stock; more of this in our Director's report.

Lastly, a word of appreciation to our bursars, who have had to cope with a disrupted and in many ways, wretched year. Some of them have sent us their stories; we will be publishing some of these on our website. Please do look for them there – they confirm the deep needs of these young South Africans and reinforce our determination to help as much as we are able.

**Geoff Everingham**  
**Chairman**

## DIRECTOR'S REPORT

Our experience this past year and into 2021, seems to indicate that the “new norm” requires a heightened sense of awareness; the courage for individuals, governments, the private and public sector to adapt and respond with an immediate agility that was not a requirement of our yesteryears.

*What did we become particularly aware of that stood to negatively impact on our operations?* Our primary insight was that lockdown meant the loss of our point of administrative and personal contact with the learner. It moved the learner considerably further from our immediate reach. Their lack of access to technology coupled with the increased financial burden suffered by their families created a barrier that made it difficult for many to initiate direct contact with the ASF office.

*How did we respond to this challenge?* Despite our immediate point of contact suddenly being rendered inaccessible, our strong relationship with our network of Bursary Representatives allowed, albeit third party facilitated (WhatsApp Group), a constant communication channel to be operable – one that continued to hold the learner within our reach. In this way we could ensure every learner duly received their 2nd payment and could reach out to us for additional assistance (i.e., food parcels). It was a 3-way communication with the wellbeing of the learner at its core.

*How did we turn “obstacle” into “opportunity”?* Cooperation between ASF and our network of Bursary Representatives led to a collection of stories from our 2020 cohort of learners, their parents and school management teams on how Covid-19 impacted on their academic and personal lives. This has now been collated into a wonderful publication (*The Global Covid-19 Pandemic and I*) that we hope will be placed in every school library. We view this collection of Covid-19 stories as a resource that has brought a measure of healing to those that were given the platform to freely and authentically express themselves; a resource that will inspire the learner-of-tomorrow, and a resource that we hope might, in some small measure, serve to generate additional income for the ASF.

*Our family of donors respond:* We were by no means surprised that, despite everyone’s world being turned topsy turvy, our donors responded generously – not because it was expected or might have seemed the right thing to do, but because the work of this Fund lives in their hearts. The continued support enabled us to make first and second payments to our bursars, facilitate the

delivery of food parcels where so requested, and disburse Shoprite vouchers to 250 bursars. On behalf of these young learners and that of their families, we say Thank You – may you, in return, be richly blessed.

*How far into the future dare we look?* The ASF has a 50-year track record and where once there was primarily uncertainty around adequate schooling for learners that hail from marginalised communities and under-resourced schools, there is now the added burden of uncertainty around the ability of their parents/guardians to hold onto their employment and provide for their families. Now, more than ever, in addition to the financial support, the listening ear – the guidance – the preparing for the world of work, is what the learner is going to seek out while navigating their high school journey. It is incumbent on us to do what we can, act if we must, and to leave no stone unturned; and without your understanding, compassion and support this organisation cannot offer the financial and emotional pillars our bursars have come to know.

Let not a world turned topsy turvy have us respond in a manner that appears devoid of compassion and fraught with fear. Let this world turned topsy turvy have us reflect with gratitude and respond with care and understanding. Again, the African Scholars' Fund thanks you for your continued support.



And in this same breath where we thank you for your continued support, we know that we may appeal to you to share the work of this Fund and the reason for your continued giving with your children, extended family and your friends. Let them come to know why the African Scholars' Fund is so dear to your heart and invite them to continue your legacy of giving. Have them know that this is a cause well worth the giving to – your longstanding support is testimony to this. And have it dawn on them that your journey of giving, of making an impact where it truly counts and is tangible, is well worth emulating. How can they not respond positively to such a heart-centred call and to your longstanding ambassadorship of this Fund?

We are most grateful and look forward to our continued journey.

**Eliza James**  
**Director**

## **FINANCIAL REPORT**

### **For the year ended 31 December 2020**

We were fortunate to end the 2020 financial year with a modest surplus of R143 000 – but this is thanks to a generous bequest of R730 000 from the estate of the late MSH Miller. Without this, we would have ended the year with an operating deficit very similar to that of 2019, i.e. in excess of half a million rand. We realize that this is not sustainable, and that we need to find ways of increasing donations, which fell by about 10% from 2019 levels, perhaps understandably given the effects of the Covid pandemic on donors' finances. There was also a small decline in investment income as distributions of dividends fell and interest rates dropped.

Expenses were generally well contained – salaries, which are allocated across the various categories of expense according to the nature of the work done by staff, were little changed from the prior year as staff agreed that in the circumstances of the pandemic, they did not expect a salary increase; we appreciate that they were prepared to make this sacrifice.

Learner awards were at a reduced level too, this being due to the schools being under complete lockdown over the period where 607 Gr8 learners were expected to forward applications to the Fund.

Our balance sheet has not changed greatly. We are enormously fortunate to have a good level of investments, generating income which assists in meeting expenses, and in owning the property in Fleming Rd, Wynberg which provides suitable office premises, gives security of tenure, and saves on rental costs which had kept escalating every year.

Investments are shown at market value, and this showed a decline of around 4% over the year, primarily due to a drop in value of investments in the real estate investments trusts we held, reflecting market conditions. There has been a modest recovery since the year end and we have managed to avoid drawing on the capital of these investments.

We have budgeted for a deficit in 2021 as we believe it is imperative at least to maintain the current level of support for our bursars; we hope that with the continued support of our loyal donors and more active fundraising on our part, both in South Africa and in the UK, we will be able to reduce the level of the deficit.

Lastly, I am writing this as a 'temporary' treasurer while we seek a replacement for Stephen Flesch, who has retired to the Southern Cape after an amazing twenty years of service as treasurer and trustee – thank you so much, Stephen!

**Geoff Everingham**  
**(Acting Treasurer)**

Let us help you manage your donation - enquire about our  
Donor Debit Order Facility

## Abridged Financial Statement for the year ended 31 December 2020

### INCOME STATEMENT

	<b>2020</b>		<b>2019</b>	
<b>INCOME</b>	<b>R'000</b>	<b>R'000</b>	<b>R'000</b>	<b>R'000</b>
Bequests	780		169	
Donations (Incl. donations from UK)	2363		2602	
Contribution toward salaries	380		360	
Net Investment Income	<u>460</u>	3983	<u>513</u>	3644

### **EXPENDITURE**

Learner Awards	1625		1962	
Learner Support	755		763	
Project Expenses	44		114	
Donor Liaison, Marketing/Fundraising	752		689	
Management Costs	183		188	
Finance & Human Resources	366		364	
Property Running Costs	<u>115</u>	<u>3840</u>	<u>131</u>	<u>4211</u>
Operating Surplus/(Deficit)		143		-567
Surplus on Sale of Investments		<u>0</u>		<u>79</u>
<b>SURPLUS/Deficit for the year</b>		<u><u>143</u></u>		<u><u>-488</u></u>

### BALANCE SHEET

#### **ASSETS**

Property	2700	2700
Investments	9925	10365
Cash-on-hand	<u>373</u>	<u>477</u>
	<u><u>12998</u></u>	<u><u>13542</u></u>

#### **ACCUMULATED FUNDS**

Capital Trust Fund	60	60
General Fund	9907	9750
Revaluation Reserve	2973	3676
Special Funds	<u>1</u>	<u>15</u>

#### **LIABILITIES**

Accounts & other payables	34	19
Provisions (Leave Accrual)	<u>23</u>	<u>22</u>
	<u><u>12998</u></u>	<u><u>13542</u></u>

Copies of our audited financial statements are available at the office on request. The Trustees thank Messrs Browne & Associates, particularly Richard Browne, for the prompt audit of our books. Investments are shown at Market Value as at 31 December 2020.

# ***AFRICAN SCHOLARS' FUND (UK)***

*UK Address: 10 Lurkins Rise, Goudhurst, Cranbrook, Kent, TN17 1ED*

*SA Address: P O Box 18097, Wynberg, Cape Town, 7945, South Africa*

*Tel: 01580 211550*

*email: uk@asf.org.za*

Charity Number 1070406

---

## **CHAIRMAN'S REPORT FOR 2020**

It gives me great pleasure to report again on the activity of the UK branch of the ASF. Individual contributions during the year totalled £15,295 which has been transferred to the office in Cape Town for disbursement.

We offer our thanks to all our supporters who provide encouragement and finance for the work of the Fund. In particular, we have a number of long-term contributors with regular and valued donations.

It is with deep sadness that we were advised of the death of Prof. Jim Gallacher. He was a long-time supporter of the Fund and was recognised as a pioneer in the field of lifelong learning. The hills of Scotland, and around Glasgow in particular, were a great passion, and he was a man who was brave enough to speak the truth to power. He will be missed.

Sandy Elsworth  
Chairman, Board of Trustees  
African Scholars Fund (UK)

## **STATEMENT OF ACCOUNTS TO 31 DECEMBER 2020**

INCOME:	Donations Received	£12,650.77	
	Gift Aid reclaimed	£2,640.87	
	Interest	£00,003.51	
	Sub-total Income		£15,295.15
EXPENSES:	Bank charges	£30.50	
	Administration	£0.00	
	Sub-total Expenses		£30.50
AVAILABLE FOR DISBURSEMENT:			£15,264.65

**The Charity has no assets or liabilities.**

## SCHOOL REPORT – 2020

### Nontuthuzelo Mnyaluza – Schools Portfolio Manager

Technically 2200 applications were received for 2020. 1593 x Gr9 – Gr12 bursars applied with their December 2019 results and 607 x Gr8 bursars were envisaged to apply with their March results after having written their first term exams. When Covid-19 forced the national lockdown, those applications were not received until after schools re-opened. A decision was then taken to carry the 607 applications over into 2021 and accept them onto the ASF programme as a new intake of Gr9 bursars.

We managed to process and disburse funds to our 1593 Grade 9 -12 Bursars [1<sup>st</sup> payment = R700 + 2<sup>nd</sup> payment = R300]. In addition to the 1<sup>st</sup> and 2<sup>nd</sup> payments, the percentage of operational costs specifically pertaining to disbursement of these awards (audit fees, bank charges, database maintenance, postage, printing & stationery) brings the total spend to R1 629 million.

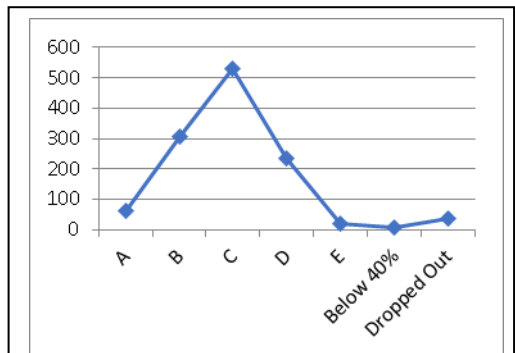
There were no results criterion assessment for the 2<sup>nd</sup> payments, since no June exams were conducted at schools. However, every one of our 1593 Grade 9 – 12 bursars received their 2<sup>nd</sup> payments. 402 Bursars were in their last year of schooling (matriculants). The distribution of funds was as follows:

Province	Number of Bursars	Percentage
Number of Bursars (Paid)	1593	
Eastern Cape	618	39%
Western Cape	935	58%
Northern Cape	40	3%

### RESULTS (GRADE 9 – 11)

The number of Gr9 to Gr11 bursars that received an award this year totals 1191, of whom 1156 (97%) wrote their final exam and submitted their December reports. 35 (3%), did not write their exams (dropped out during the course of the year).

**1156/1191 = 97% pass rate**



## SPECIAL AWARDS AND ADDITIONAL SUPPORT

**Mears Award (Top grade 10 learner in 2020):** was presented to Simango Francisco from Sinenjongo High School in Milnerton.

**NSFAS Application Guide (for Grade 12s):** Distributed to all the 402 Grade 12s – received positive feedback on how the booklet helped them to navigate the NSFAS website.

## MATRIC RESULTS OVERVIEW

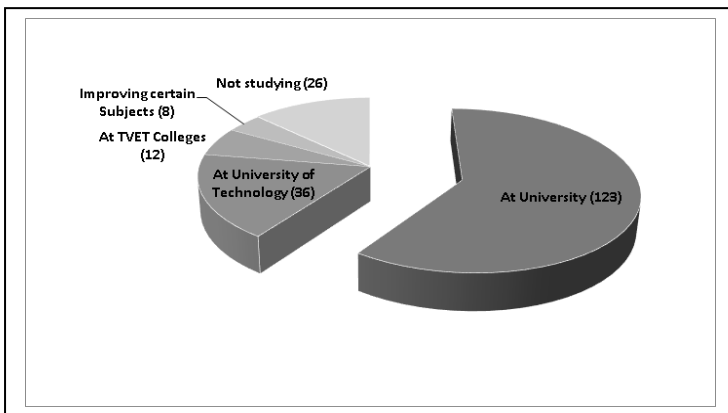
**402 Matriculants received their ASF awards in 2020.** 3 dropped out of school during the year; 399 sat to write their final exams. 260 (65%) sent us their results (we are still following up on the outstanding 139 (35%).

**Of the 260 results that we received:**

- 242 Obtained Bachelor Passes
- 17 Diploma Passes
- 1 Higher Certificate

## WHERE ARE THEY NOW:

**(those we could reach to establish whereabouts & endeavours = 205):**



<b>AMBASSADOR SCHOOLS (29)</b>		
<b>SCHOOL</b>	<b>PROV</b>	<b>Pass Rat</b>
Cowan High School	EC	74%
Emdeni Junior Secondary School (A	EC	50%
Enkwenkwezini High School	EC	86%
Greenpoint Secondary School	EC	85%
Mirara Secondary School	EC	59%
Silimela Secondary School	EC	88%
Solomon Mahlangu High School (U	EC	92%
Soqhayisa Secondary School	EC	100%
Thobelani High School	EC	34%
Toise Secondary School	EC	42%
Zimeleni Junior Secondary School	EC	Up to Gr10
Bastiaanse Secondary School	WC	80%
Beaufort West Secondary School	WC	65%
Bridgton High School	WC	80%
Chris Hani Secondary School	WC	77%
Cosat	WC	82%
Leap	WC	77%
Groot-Brak Rivier Sek Skool	WC	90%
Hector Peterson Secondary Schoo	WC	71%
Intsebenziswano High School	WC	77%
Leiden High School (was pref)	WC	83%
Masibambane High School (CT)	WC	90%
Manyano High School	WC	96%
Masiyile Secondary School	WC	81%
Percy Mdala High School	WC	82%
Phandulwazi High School (CT)	WC	69%
Saxonsea Secondary School	WC	89%
Sinenjongo High School	WC	88%
Siphamandla Secondary School	WC	87%

Despite the additional challenges brought on by Covid-19, our matriculants achieved beyond expectations.

<b>PREFERRED SCHOOLS (26)</b>		
<b>SCHOOL</b>	<b>PROV</b>	<b>Pass Rat</b>
Ekuphumleni Secondary School	EC	90%
Funda Secondary School	EC	54%
J A Calata High School	EC	86%
Johnson Ngqongoza Sec School	EC	80%
Kuyasa Combined School (Pt Alfi	EC	89%
Mzomhle High School	EC	91%
Ngwenyathi Sec School	EC	73%
Nqweba High School	EC	75%
Phaphani High School	EC	65%
Richard Varha Secondary School	EC	70%
Smiling Valley Farm School	EC	To Gr9
Spandau Secondary School	EC	46%
St Colmcille School	EC	68%
St Georges High School	EC	56%
Willowmore Secondary School	EC	68%
Tetlanyo High School	NC	60%
Carlton van Heerden High School	NC	80%
Umso Secondary School	NC	55%
Vuyolwethu Secondary School	NC	64%
Kuyakhanya Junior School	WC	Jnr Schl
Sinethemba Secondary School (C	WC	53%
Sophumelela Secondary School	WC	72%
D M Tutu HS	WC	85%
Wallacedene Secondary School (	WC	58%
Harry Gwala High School	WC	72%
Intlanganiso High School	WC	67%

## MATRIC HIGHLIGHTS

### WESTERN CAPE:

- ❖ Kwanele Mabanga from Cosat in Khayelitsha – passed with 88% aggregate, obtained distinctions for all his seven subjects. He is now registered at the University of Cape Town studying Electrical and Computer Engineering.
- ❖ Akhuphelo Klaas was registered at Siphamandla SSS in Khayelitsha – obtained 81% aggregate and five distinctions. He is now registered at Wits University pursuing Bachelor of Health Sciences.
- ❖ Kenana Zenande matriculated from Phandulwazi High School, she obtained 5 distinctions with an overall aggregate of 81%. She is now studying Actuarial Science at the University of Cape Town.

### EASTERN CAPE:

- ❖ Sibulele Solilo from Solomon Mahlangu High School in Uitenhage, bagged 8 distinctions and a 90% overall aggregate. He is now studying Medicine at the University of Stellenbosch.
- ❖ Siphelele Futhusi from Kuyasa Combined School in Port Alfred. He achieved 84% average with 5 distinctions. He is now pursuing BSc studies at Rhodes University.
- ❖ Qhayiya Jezile from Richard Varha SSS in Dimbaza, obtained a 91% overall average with 6 distinctions (100% for 2 subjects). He is now enrolled at UCT, studying Medicine.



### NORTHERN CAPE:

- ❖ Paulus Basimane from Tetlanyo High School in Kimberley obtained four distinctions with 81% average. He is now enrolled at the University of Johannesburg, pursuing a Social Work degree.
- ❖ Tanga Lerato, matriculated from Carlton Van Heerden High School. She is now registered at the University of Free State for a B Ed Degree
- ❖ Rubushe Linda also from Tetlanyo High School in Kimberley obtained a bachelor pass; she is now registered at the University of Free State studying Bachelor of Social Sciences.

## EXCERPTS FROM “THANK YOU LETTERS”:

*“With utmost respect I would love to show my gratitude to the African Scholars Fund. Thank you all for those years you funded me throughout secondary school, I never lacked anything related to school. I mean school uniforms, school fees and many more you paid that for me in full and I will forever be grateful. I got a reason to work hard and achieved better grades because I knew you were looking to me and as a result my grades improved for the best. I managed to pass my grade 12 with a bachelor that consists of 4 distinctions.*

*I discovered a lot through those years you funded me, I discovered I could be the best I can ever be and no poor background will determine my future. The opportunities you gave us, such as the Mary Livingston Essay Award 2018, in which I attained a silver diploma, was the greatest achievement and it also enhanced my vocabulary. Now I am embarking on a new journey which is bumpy already, but I will always carry you in my heart and I will continue working extremely hard so that I can one day give back to the community. I have decided to pursue a career in Computer Science and I am certain that I shall do well. Once more I am forever grateful”.*  
SIBANDA Eileen – Grade 12 Intsebenziswano SSS in Philippi.

\*\*\*\*\*

*“I would like to thank you for the previous R700. It made a huge difference in my life especially now that we had lockdown, my mother had to stay at home without any income because for her to get money she has to braai meat and sell it. We then only had the social grant to meet our needs, which was increased by R1300 during this corona pandemic. Even now that she is back to her 'job' the money is still not enough because she earns only about +/- R1500 per month.*

*When I received the R700 from scholarship the first thing was to pay my school fees which are R440 and then I also managed to buy my stationery and school shoes. I really appreciate your help, you inspired me to work hard so the donors can see and give more and in that way I can also help thousands of learners who are willing to study further but have finance problems”.* MKI Nande – Grade 11 Sinenjongo High School in Milnerton.

\*\*\*\*\*

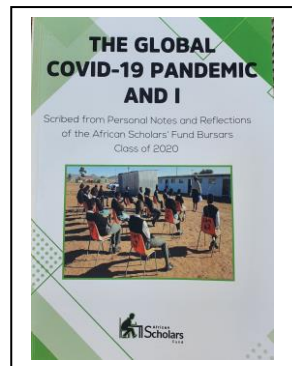
*“The past few months have brought a great deal of setbacks in my life and in the family. My father's hours of work had been less, meaning that there was less income coming in the family because my mother is unemployed*

*and so we depend on him as a source of income. The matter of me applying to university did not help also because I needed money for my application fees so it was also taken from that small money that come in from my dad. I was helped by the money that came from my scholarship (ASF) because we used it to cover some of the house's expenses.*

*I am truly grateful to the fund and I hope that more people like me can be helped, not only here in high school but also in university because the fund funds everyone and I am not a south African citizen, so I don't qualify for the NSF and so I might not find funding to continue with my studies, but regardless of that I am studying hard so that if there's a potential funding that might come, I will be covered.*

*As I can see that the pandemic is not going away anytime soon, but I need to put effort on my future and focus on my books instead of worrying about funding, but it's difficult not to so that I can do computer science next year. Overall thank you so much for helping us".* MACAMO Silvester – Grade 12 Sinenjongo High School in Milnerton.

**IT IS WITH MUCH HUMILITY THAT WE  
ACKNOWLEDGE OUR BURSARS'  
AMAZING RESILIENCE IN THE FACE OF  
YET ANOTHER SEEMINGLY  
INSURMOUNTABLE CHALLENGE.  
CONTACT THE OFFICE FOR YOUR COPY –  
AVAILABLE IN THE NEXT FEW MONTHS.**



## DONOR REPORT - 2020

### Miche Nicholas – Donor Portfolio Manager

The Trustees wish to thank our regular sponsors and donors for their continued support for the period **1.1.2020 to 31.12.2020**. (Past bursars, now donors, are in bold)

ABE BAILEY TRUST	CARTER, Mr & Mrs D E M	GALLACHER, Prof J
ABRAMOVITZ, Ms C	CHAMBERLIN CHARITABLE	GARDENER, Mr & Mrs JB
ACKERMAN FAMILY	Trust, The Elsie & Allan	GARLICK, Mrs A
Educational Trust, The	CHAMPION CHARITABLE	GAUSSIAN ENGINEERING
ALLSOPP, Mr A C	Trust, Hillary & Dorothy	GILES, Mr D R
ANDREW, Mr K	CHISHOLM, Mr & Mrs T	GOLDBERG, Mr M
ANON (Cape Town)	CITY OF GLASGOW, College	GREENE, Prof & Mrs J R
ANON (Rondebosch)	CLEMENTS, Ms K	GRIMBEEK, Ms J
ANON (U.K.)	CORDER, Prof H & Ms C	HALL, Suzanne
AUTHORS, EPIDEMIOLOGY,	COUSINS, Mr & Mrs D A	HEALE, Mr J
“A Research Manual for SA”	COXON, W & B	HERRBSTEIN, D M
A.W. BLEKTON TRUST	CTP LIMITED	HOSFORD, Ms J
BADENOCH, A C	DAVEY, Mr B R	HOWES, Mr L W
BAGLIONE, G	DAVID GRAAAF	HOWIE, Justice & Mrs C T
BAIGRIE, Drs R & C	Foundation	IMBEWU-SUISSE
BANNATYNE, Ms E R	DAVIDGE, Mr & Mrs J	IRLAM, Mr and Mrs J
BARNETT, Ann	<b>DAYIMANI, Ms A</b>	JAMES, Ms E
BARNETT, Mrs E A	DEAN, Dr T	JANISCH, Mr & Mrs M W
BATTINO, Prof R	DE LISLE, Mrs M	JARDINE, Dr & Mrs W I
BEATIE, Jenifer	DERHAM, Mrs C	JENSEN, Mrs G
BEVIS, Mrs A	DIERICH VOIGT MIA (Pty)	JOBSON, Mr T
BENTON, Megan	Limited – PATHCARE	JONGEJAN, Vera
BERMAN, F	DIRECT AXIS	JOYCE, Mr & Mrs N
BERMAN Family	DIN DIN TRUST, The	KEEN, Dr & Mrs G A
BIKE TOWN AFRICA	DOUGLAS JOOSTE TRUST,	KEIZER, Bert & Marianne
BLOCH PROPERTIES	The	KELVIN GROVE BOWLS
<b>BOK, Mr A</b>	D.RICH PLUMBING CC	CLUB
BOL, Dr P & Mrs P	DUNCAN FAMILY TRUST,	KENT, Ms P
BOTTON, Mrs A	The Francis	KLEIN, Mr & Mrs E
BRADLOW, A P	DUNLEAVY, Chloe	KNIGHTS, Mrs S
BRAND, Dr A	<b>DYASI, Mr J M</b>	KOJIMA, Dr M
BRATHWAITE, Ms C	EHRlich, Prof R	LEARY, P M
BRIENZA, Ms G	EINHORN, Dr F and Mrs C	LEMANSKI, C L
BURGER, Ms E	ELSWORTH, Dr M	LEEWIS, Rob & Marjan
BURNETT, Phillip	EVERETT, Prof & Mrs W J	LE ROUX, Mr J
BURTON, Mr & Mrs G	EVERINGHAM, Prof & Mrs G	LIDDLE, Mr & Mrs C
CAMBRIDGE UNIVERSITY	FACSURE FINANCIAL	LINDER, Mrs F
PRESS, Royalties	Management Services	LORIMER, Mrs P
CATALYST FUND	FARLAM, Justice & Mrs I G	MADDEN, Dr
Managers Global	FERGUS, Dr E	MALHERBE, Mr & Mrs P
CATALYST FUND	FISHER, Mrs J	MALHERBE, Mrs V C
Managers SA	FLESCH, Mr & Mrs W J	<b>MANJEZI, Ms K M</b>
CATALYST FUND Managers	FOGEL, Mr G	<b>MANTLA, Mr M</b>
Alternative Investments	FOLB, Prof & Mrs P	MARCK, Klaas & Dieuwke
CARTER FAMILY	FOSKETT, Ms K	MAREE, Prof Johann
Charitable Trust	FOX, Beryl	MARKS, Ruby

(Ambassador)	REITZ, Mrs E	(Pinelands)
MARTIN, S	REYNOLDS, Ms P	ST THOMAS CHURCH
McNAMARA, Dr & Mrs J D	ROBERTS, Mr P	(Rondebosch)
MELVILLE, Mr & Mrs D R	ROBERTSON, Dr G & Dr J	SULCAS, R
MENTOR, Dr K	ROBERTSON, Dr N R C	TEUNISSEN, Ton & Irene
MICHELL, Mrs S D	ROBINSON, Mr & Mrs A M L	TESTER, Sue
MIDDELMANN, Mr M.J. (in honour of his parents who were early supporters of the ASF)	ROGERS, Mr O & Mrs S	TIMKOE, Ms S
MILLAR, Mr J R	ROLLO, Mr & Mrs M	TIMMER, Diane
MILLER, MSH – Estate Late	ROSEBANK SPIRITUAL	TIPPING, Ms N
<b>MOIKWATHLAI, Mr K</b>	Development Group	TRANS AFRICA SAFARIS
MOLL, Dr P	ROSSINGTON, Mrs S	TUESDAY BRIDGE FRIENDS
MOUNTFORD, Ms S W	RUNDLE, Margaret	TUFFIN, Mr P
<b>MPHAKAMA, Mr B</b>	RYAN, Ms W	TURNER, Mr J A G
NAYLOR, Ms M	SAUNDERS, Dr & Mrs S	UNION CHURCH of Proctor, USA
NG HENSHILWOOD TRUST	SCHAUERTE, Dr A	UNIVERSITY of the THIRD AGE, Cape Town
NOAKES FAMILY Charitable Trust	SEBITOSI-VAN JAARSVELD, Dr S	VAN DER HORN, Mr F J
NUSSBAUM FOUNDATION, The Rolf-Stephan	SG HAMBROS	VAN DER SPUY, Emeritus Professor, Z M
<b>OLIVER, Mrs L</b>	SHAH, Mr R	VAN DER WEIJDEN, Wouter
OOSTHUIZEN, Ms L	SHARP, N	VERZELLENBERG, Guus & Marlies
OPIOLKA, E	SHEAD, Mrs K	WATKYNS, Councillor B
ORPEN, Mr & Mrs C M W	SINCLAIR, Mrs N	WEBB, Prof J & Mrs A
OWEN, Mrs K	SMALBERGER, Justice J W	WEDEPOHL, Dr & Mrs P T
PERSONAL TRUST	SMITH, Mrs G	WESTMINSTER ABBEY
PETROMONITOR AFRICA	SMITH, Mr & Mrs Z	WILSON, Mrs E
PIETERSE, Ms S A	SMITH, Dr J W	WILSON, Mr M
PIETERSEN, Mrs E M	SOAN, Mrs K and family	WIXTED, Mr B & Mrs M
PRICE, Mrs A K	<b>SOLOMBELA, Mr L</b>	YAFFES, Chloe
PROBYN, Mrs M J	SPARK, Mellony	YAFFES, Mia
PROOF COMMUNICATION	SRK Consulting	YATES, Ms Y
RAATH TRUST, The Susan	STANFLIET, Mrs Z	ZILLE, Right Honourable Helen
RABINOWITZ, Mr B	STARKE, Mrs E	
RAMSAY, Mr & Mrs A	STEYN, Mrs J E	
	STILWELL, L	
	ST OLA's TRUST	
	ST STEPHENS CHURCH	

## IN MEMORIAM - 2020

### **Prof Jim Gallacher, Mrs Bax, Ms MSH Miller, FR Bradlow**

These were supporters of our work, faithful in the giving of money and encouragement.  
May they rest in perfect peace. Our sympathies go to their families and friends.

## Tax Exemption & Employment Equity (EE)

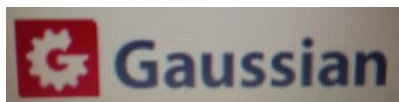
- \* All donations received are fully tax deductible PBO 130002416. A Section 18A receipt will be provided when a donation is made.
- \* Advance your EMPLOYMENT EQUITY RATING by donating to our organisation. On request our NPO Certificate, SARS 18A Tax Exemption Certificate, Financials or Constitution will immediately be forwarded to you.

## PARTNERSHIPS

There are a good many people who support this organisation financially. Without their aid we would not be able to make an impact the lives of our young learners – our individual donors are acknowledged in the foregoing pages. Those who are acknowledged below are partners who are more hands-on in their support. Every one of these partnerships have been nothing short of amazing and their impact life-changing.



The 5-year Maths Programme Partnership that kicked off in 2017 enters its final year in 2021. *Objectives:* Inculcate a love of mathematics; increase the number of learners doing pure maths; mentor learners towards obtaining results that will enable them to enter into institutions of higher learning. *Results:* Of most significance is that the number of pure math classes have increased from 2 (70 learners) to 5 (145 learners) and a pass-rate that is on a steady increase every year. Pathcare continues to provide funds for the mathematics intervention at Chris Hani High School (Khayalitsha) comprising Educator salary, additional resources required & educational camps.



We've had an amazing 6-year journey with Gaussian Engineering, one that resulted in the sponsorship of 236 bursars, 2 matriculants each being offered a one-year internship where Yanga Sodoza was offered a permanent position and is now employed as Service Solutions Administrator. In addition, Gaussian championed and funded the ASF Gr12 Computer Literacy Programme (90 bursars) at Phandulwazi High School 2020. The Computer Literacy Programme continues into 2021 and has expanded to include Masibambane High School – in total 160 Gr12 bursars. Gaussian has since been incorporated into Tetra Pak with whom the ASF hopes to continue and grow the relationship.



The 7-year partnership with Biketown Africa has seen 825 learners at our rural schools, predominantly in the Eastern Cape, each receive a bicycle, safety helmet and repair kit. With Covid-19 bringing travel to a halt, David and his volunteers could not travel to South Africa to again facilitate a handover – instead a generous financial donation was made towards operations that would assist in keeping the organisation afloat and a further financial commitment to 25 learners for their 2020 academic year.

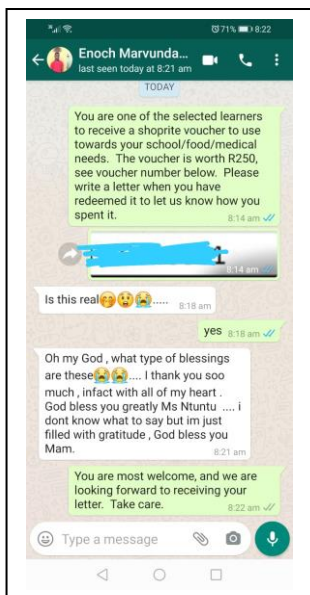


It has been an 8-year journey of note with Ambassador Ruby Marks who, in her personal capacity, annually supports up to 40 ASF learners and when in the country pays the schools a visit to further encourage and support her wards. This year Ambassador Marks hosted a *Life Planning Motivational Workshop* at the Castle of Good Hope in Cape Town for her cohort of Gr12 bursars. In addition to offering financial assistance to two Gr12 learners having to fend for themselves (no parental support), Ambassador Marks also is funding a Nature Conservation student studying at the Nelson Mandela University.



There are a number of wonderfully generous donors who wish to remain anonymous. Please know that your compassion and continued support of the learners in our care is acknowledged with much gratitude.

**COVID RELIEF: David Graaff Foundation, Drs Kojima and Moll**  
250 Bursars each received a R250 Shoprite Voucher – the  
WhatsApp message below best expresses their gratitude 😊:



## A GENTLE REMINDER

- ✓ Stories from our schools, learners, projects and alumni appear on our website, and will be updated from time to time, to be a living history of the ASF – <http://asf.org.za/>
- ✓ To view short 4 – 7min ASF video clips, visit our YouTube Channel – <http://ow.ly/bKKg50BhYiN>
- ✓ To partner with the ASF, contact – [eliza@asf.org.za](mailto:eliza@asf.org.za) OR [Miche@asf.org.za](mailto:Miche@asf.org.za)

## STAFF MEMBERS:



**Eliza James:** Director.

**Zena Stanfliet:** Accounts Manager - manages accounts, bursar payments and donor debit order collections.



**Miche Nicholas:** Donor Portfolio Manager – manages the relationship with our individual ASF donor base and assists the Director with Social Media and Corporate partnerships.



**Nontuthuzelo Mnyaluza:** Schools Portfolio Manager - manages the schools' portfolio, learner database and bursar awards.



**Busisiwe Magwentshu:** Administrative Assistant – manages the front office and supports the Schools Portfolio Manager.



**PATRON:** Dr Margaret Elsworth. **BOARD OF TRUSTEES:** Prof Geoff Everingham (Chair), Mr. Thurston Brown, Prof Hugh Corder, Mr. Stephen Flesch, Mr. John Gardener, Mr Barry Hart, Ms. Wendy Moulton, Prof John Webb, Dr Ronald Benjamin, Mr. Moshe Apleni & Ms Eliza James (Dir).

**UK OFFICE:** Sandy Elsworth (Chair), Peter Roberts (Trustee)